

Off-the-Shelf Mosaic Product Characteristics	
Product Components And Format	+ Image file: GeoTIFF file that contains image data and geolocation information + Metadata file: XML format metadata file + Browse image file: GeoTIFF format + Source image map (SIM) fileset (cutlines) – Esri shapefile (SHP) format
Image Bands	Natural color – Red, Green, Blue (RGB)
Image Bit Depth	8-bit
Resolution	5 m
Cloud Cover	3% or less
Product Tile Size	Standard tile size is 30 x 30 min (approx. 55 x 55 km at the Equator) < 0.5 GB per tile
Horizontal Datum	WGS84
Vertical Projection	UTM



Sao Paulo, Brazil



Partial Mosaic of India

How to Access Your RapidEye Mosaics

- » RapidEye Mosaics are available to customers via streaming image service
- » No data management required. Users can access mosaics anytime, anywhere:
 - » Hosted by Planet Labs as ArcGIS Online Premium Content
 - » Available as an OGC Web Map Service (WMS) hosted by Planet Labs

For Further Information

Planet Labs San Francisco
 sales@planet.com
 Toll Free: 844 892-0786
 International: +1 415 829-3313

Planet Labs Berlin
 Phone: +49 30-6098300-100
 Fax: +49 30-6098300-101

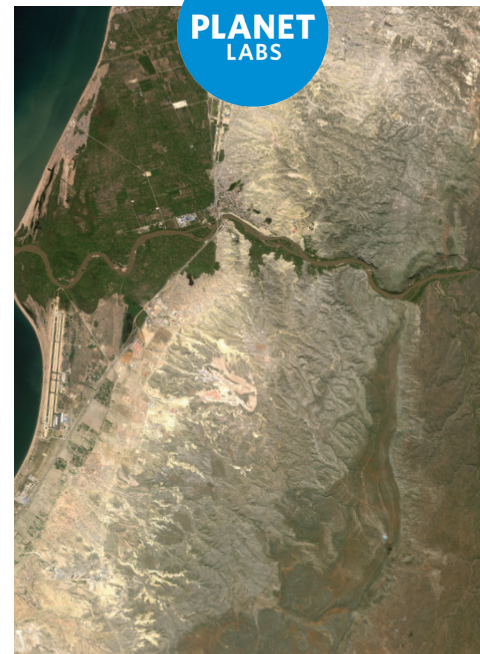
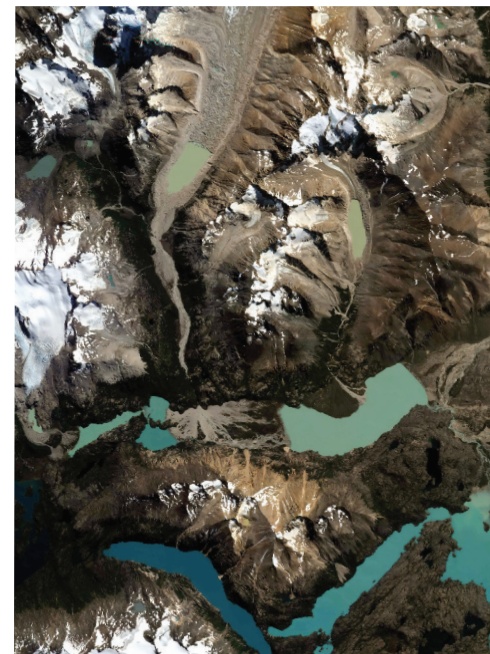
Planet Labs Lethbridge
 Toll Free: +1 800 940 3617
 International: +1 403 381-2800

Request a Demo

For more information contact us at sales@planet.com. We can provide you with WMS access to any of our Off-the-Shelf Mosaics. Download demo data over select areas at: www.blackbridge.com/rapideye/myrapideye/



Sylt, Germany



RapidEye Mosaics

Get the big picture. Recent and accurate seamless coverage.

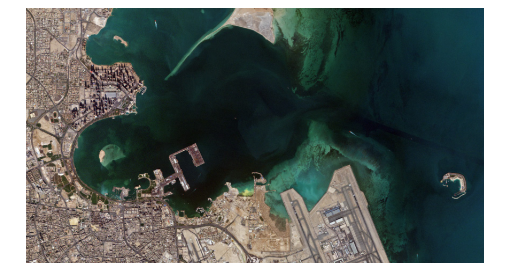
Why RapidEye Mosaics?

- » **Recent** – the majority of the data used to produce our mosaics is less than one year old at the time of production
- » **High-Resolution** – 5-meter imagery is ideal for feature extraction
- » **True Color** – see landscape features as they look in the real world (3-band RGB, 8-bit image)
- » **Virtually Cloud Free** – we always use the best available imagery to produce our mosaics
- » **Seamless and Color Balanced** – see your area of interest without misalignments or significant color variations
- » **Accurate** – geometrically aligned and orthorectified with locational accuracy better than 15 m RMSE
- » **Ready-to-Use** – no further data treatment required. Data delivered in an “Open & Go” GIS-ready format
- » **Online** – access mosaic data online via WMS, WTMS or a hosted Esri image service
- » **Cost-Effective** – best value in resolution range

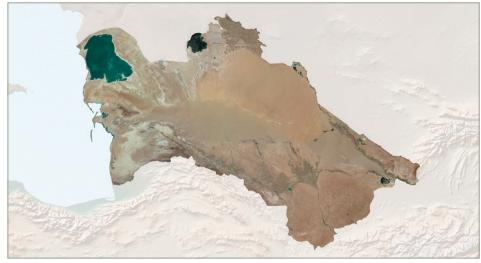
Available Off-The-Shelf or Custom-Created

Planet Labs has a growing number of country mosaics available off-the-shelf. However, if you need any of the following, we will produce it:

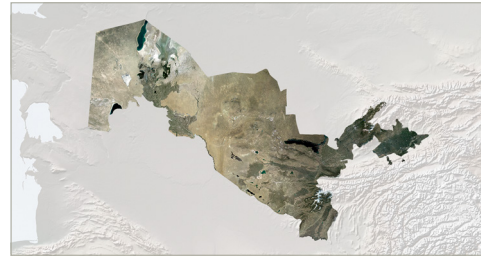
- » An update of an existing off-the-shelf mosaic
- » A mosaic over any other country or region
- » An existing or new mosaic customized according to your needs (e.g. different band combination, bit-depth, tiling, format)



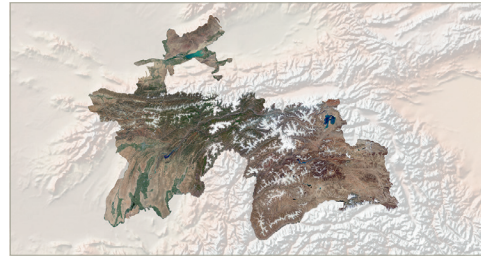
Doha, Qatar



Turkmenistan



Uzbekistan



Tajikistan



Pakistan



Germany



North Korea



Turkey



Yemen



Cameroon



Nigeria



Congo, DR



Angola



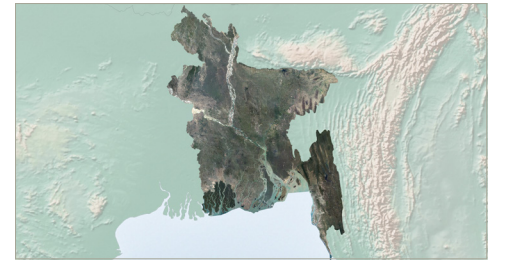
Mozambique



Laos



Tanzania



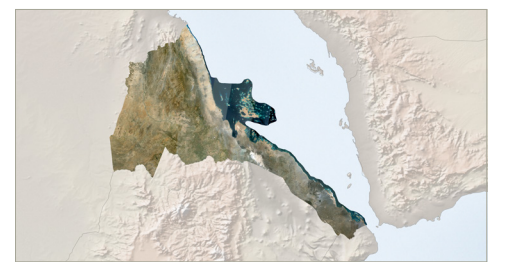
Bangladesh



Malaysia



Oman



Eritrea



Somalia

